

# hotcast Sprue Nozzle

Sprue Nozzle ZD 50/80 for zinc die-casting application

- Improves cycle time and part quality
- Reduces porosity and eliminates costly sprue cone
- Decreases tool costs
- Traditional cold plug socket tools can be replaced by the hotcast sprue nozzle
- Increased design options with new mold design e.g. lower cast channel width
- Less wastage after finishing like electro-plating
- Continuous heating from goose neck to the mold
- Integrates into 50T and 80T die-casting machines



## Advantages

- Up to 40% reduced cycle time
- Up to 30% less shot weight
- Up to 7% more part weight due to higher microstructure density

## Technical key features

Power	1000 W ± 10%
Standard connection voltage	230 V
Temperature sensor	Type K (NiCr-Ni), internal
Max temp. insulation ring	800°C / 1470°F (short term) 500°C / 930°F (long term)
Pressure resistance insulation ring	330 N/mm <sup>2</sup>
Heater	hotspring, brass
Insulation resistance*	≥ 5 MOhm at 500 V DC
High voltage resistance*	min. 800 V AC
Leakage current*	≤ 0.5 mA at 253 V AC

\* tested at environmental temperature

## Optionen

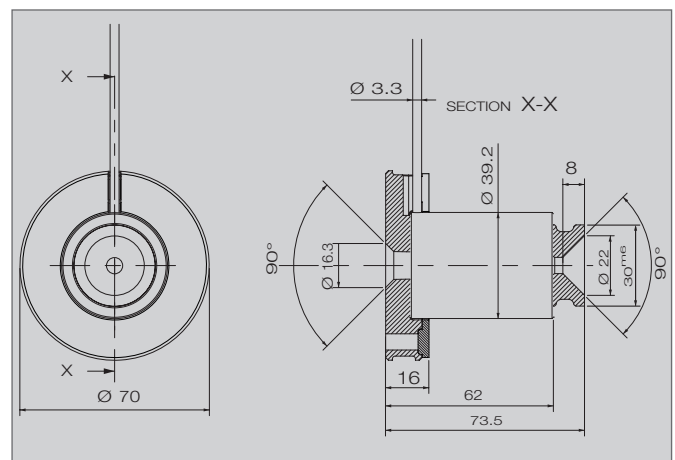
- Compatible hotcast Sealed Heater (GMH)
- hotrod die-casting cartridge heaters (HHP/G)
- Temperature control unit hotcontrol C448
- hotcast Set sprue nozzle + control unit
- hotcast Set sprue nozzle, GMH, HHP/G, control unit



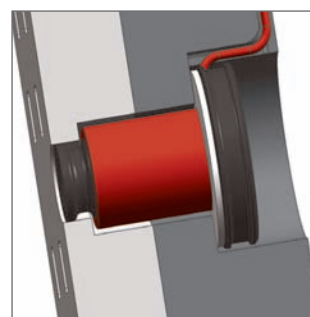
Nozzle with insulation ring



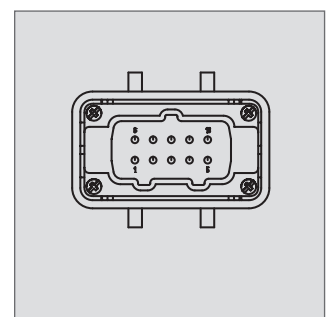
Classic and optimized sprue



General tolerance due to ISO 2768-m



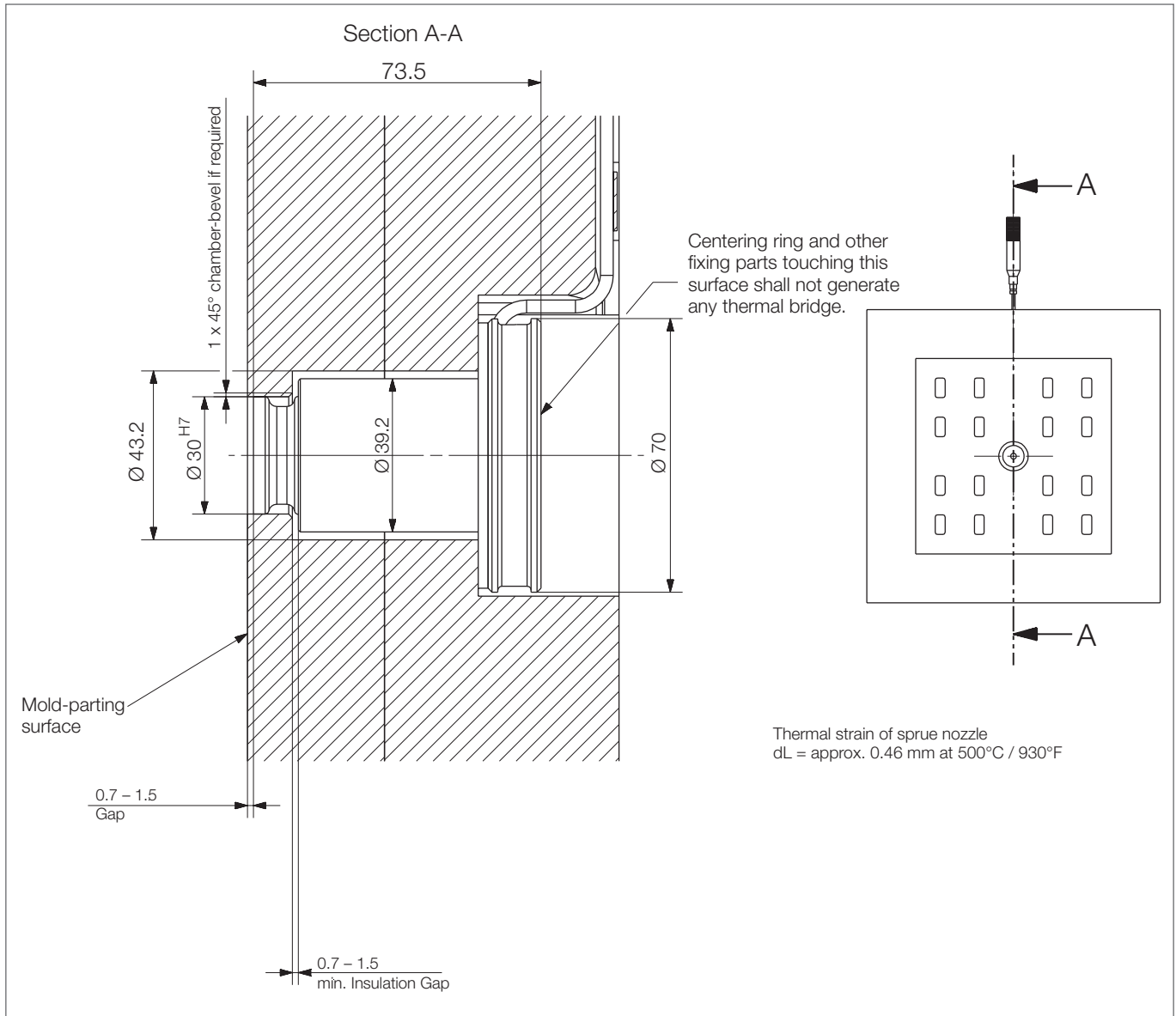
Mounted nozzle



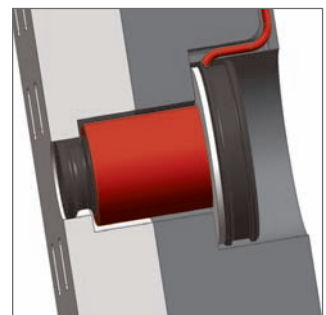
Pin configuration  
1: Sensor -  
2: Sensor +  
3: Heater L  
4: Heater N

# hotcast Sprue Nozzle

Sprue Nozzle ZD 50/80 for zinc die-casting application



Installation instruction



Mounted nozzle